

Nova ExoClad QuickClip Rainscreen Siding System

1x6 Rainscreen Siding
 5-3/8" overall, 4-7/8" coverage
 Hardwood: Batu, Ipe or Cumaru
 Softwood: Cedar, Redwood, Doug Fir
 Kiln Dried 12-14% MC
 Please inquire for CAD drawings of pattern

Optional: 1x4 Rainscreen Siding
 3-3/8" overall, 2-7/8" coverage

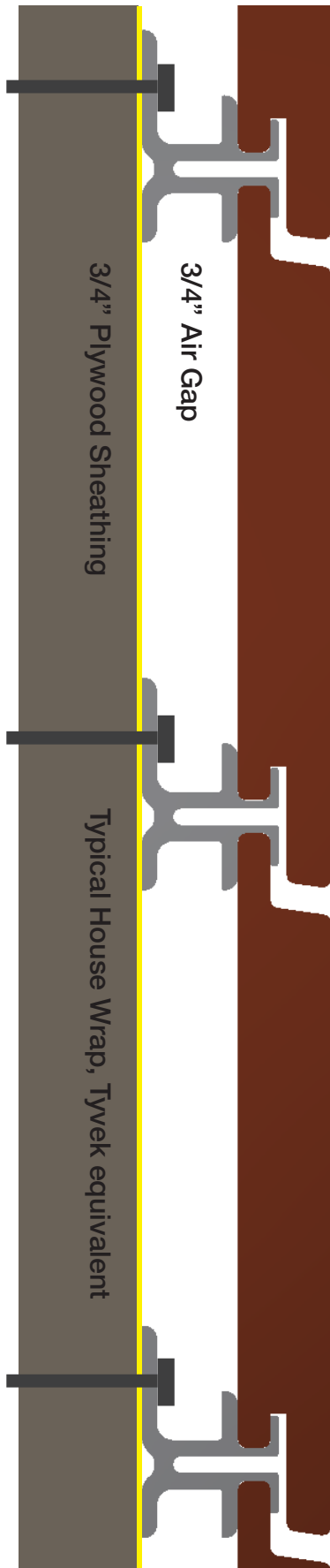
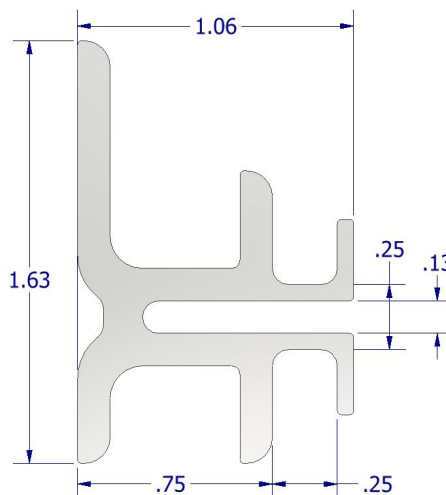
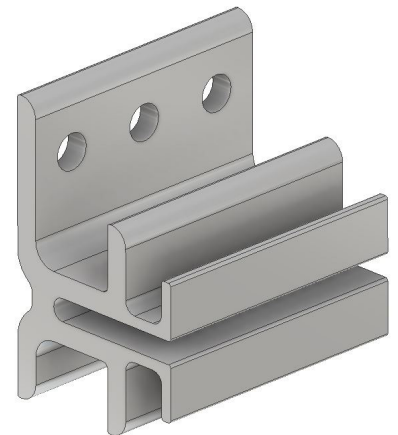
Finish with ExoShield oil stain
 or other approved penetrating oil finish

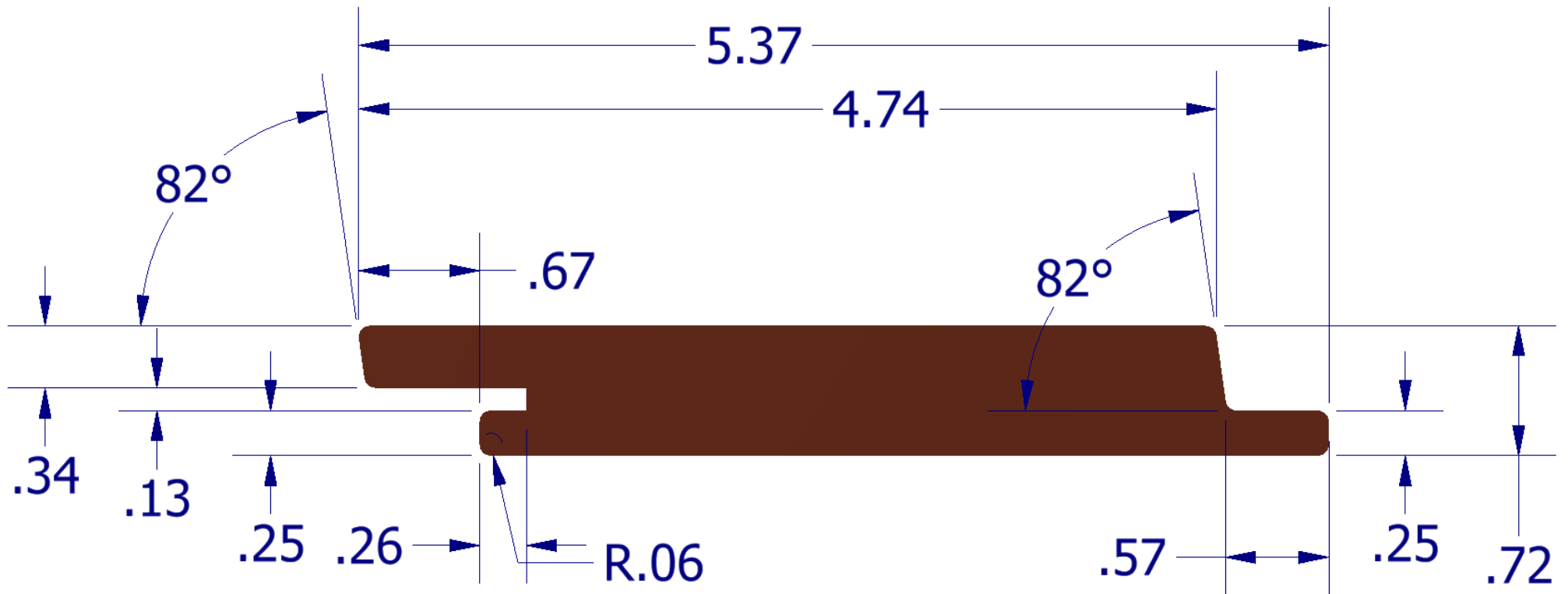
Clips are Marine Grade extruded Aluminum

Attach with exterior grade #10
 pan head screw

Use Cor-A-Vent under top and
 bottom rows

Use standard S4S or Rabbeted
 Corner Boards over butt joints.





Nova USA Wood Products LLC
 1x6 Rainscreen Siding Fineline Reveal

Designed by: Steve Getsiv
 steve@novausawood.com

Patent Pending 62/614,179

Date: April 4, 2018
 Revision: 1